

FCC COMPLIANCE

This equipment has been tested and found to comply with the limits for a class B digital device pursuant to part 15 of the FCC rules. These limits are designed to provide reasonable protection against harmful interference in a residential installation. This equipment generates, uses, and can radiate radio frequency energy and, if not installed and used in accordance with the instructions, may cause harmful interference to radio communications. However, there is no guarantee that interference will not occur in a particular installation even if installed correctly. If this equipment does cause harmful interference to radio or television reception, which can be determined by turning the equipment off and on, the user is encouraged to try to correct the interference by one or more of the following measures:

- Reorient or relocate the receiving antenna.
- Increase the distance between the equipment and the receiver.
- Connect the equipment to an outlet that is connected to a different circuit to the circuit on which the receiver is connected.
- Consult the dealer or an experienced radio/TV technician if you require any additional help.

This device complies with part 15 of the FCC Rules. Operation is subject to the following conditions: (1) This device may not cause harmful interference, and (2) this device must accept any interference received, including interference that may cause undesired operation.



The crossed-out wheeled bin symbol indicates that the item should be disposed of separately from household waste. The item should be handed in for recycling in accordance with local environmental regulations for waste disposal. By separating a marked item from household waste, you will help to reduce the volume of waste sent to incinerators or landfill sites, which helps to minimize any potential negative impact on human health and the environment.



info@uyunilighting.com
www.uyunilighting.com
+45 70 666 888

©2024 Uyuni Lighting Denmark
Bymosevej 17, 3200 Helsingør, Denmark
All Rights Reserved. Printed in China.
Patented*

*More information: www.uyunilighting.com/faq

Congratulations on the purchase of your Uyuni® REMOTE CONTROL!

All Uyuni® candles have a 3D electronic flame that gently flickers, creating a soft and inviting light. Uyuni® candles are battery-powered and are controlled using a manual switch, timer or the Uyuni® Remote Control.

Use the candles on their own or in creative arrangements in order to illuminate your home and create focal areas of light and warmth.

The Uyuni Salt Flats in Bolivia are famous for the crystal clear night skies in which the stars shine brighter than almost anywhere else on Earth. Uyuni candles bring the aura of these distant galaxies into your home as their gently flickering lights illuminate the dark to create a restful and inviting ambience.

REMOTE CONTROL OPERATION

TO START

- Ensure that the switch at the base of the Uyuni product is ON. The remote will not work if the switch at the base of the product is in either the OFF or the 6HR TIMER position.
- Without opening the battery door of the remote control, gently pull the clear tab away from the remote. Once removed, the battery will engage with the connector points and be ready to use.

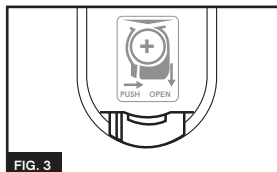
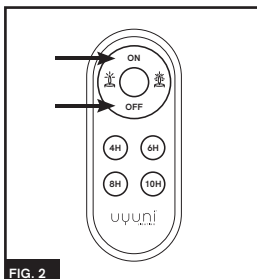
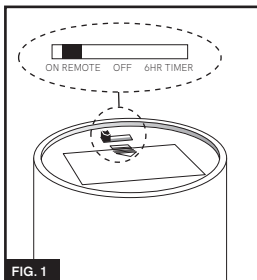
TO REPLACE THE BATTERY

- Release the battery cover (FIG. 3), pushing the small tap to the right at the same time as pushing the battery cover down. Once opened, installed the battery(+ side up). Replace the battery cover by pushing it back again.

ON/OFF OPERATION

Point the remote control at the candle and press the ON button to activate the light. To turn the light off, press the OFF button (FIG. 2). The remote control will work at a distance of up to 26 feet (8m).

When the remote is set to the ON mode, the candle will always default to the median brightness level, which is at 60% of full power.



USING ON / OFF FUNCTION ON REMOTE CONTROL

The candle light will turn off when you press the OFF button, but the device will remain in standby mode until you are ready to use it again.

To turn on more than one candle at a time, point the remote control at the candles, press the ON button and hold it in until all the candles have turned on.

TIMER OPERATION

- The remote control offers 4 unique timer options: 4, 6, 8 or 10 hours.
- To activate the timer while the Uyuni candle is on, point the remote control at the Uyuni candle and press the desired timer setting.
- If the Uyuni candle has received the signal, the flame cap will flash twice. For example, if you want the candle to stay on for 8 hours, point the remote control at the candle and press the

8H button. If the LED flame cap flashes twice then the candle will stay on for 8 hours and turn itself off for 16 hours, repeating the cycle daily.

- To turn on more than one candle at a time using the timer function, point the remote at the candles and press the ON button. Keep holding the ON button down and then press the desired timer setting button (4H, 6H, 8H or 10H) until all the candles have turned on. All the candles will turn on for that amount of time, then turn themselves off, repeating the cycle daily.

WARNING - KEEP OUT OF REACH OF CHILDREN

This product contains a button or coin cell battery. Hazardous if swallowed.

Swallowing may lead to serious injury as little as 2 hours or death, due to chemical burns and potential perforation of the oesophagus. If you suspect your child has swallowed or inserted a button battery **IN AUSTRALIA**, immediately call the 24-hour Australian Poisons Information Centre on **13 11 26** or **IN NEW ZEALAND**, immediately call the 24-hour New Zealand National Poisons Centre **0800 764 766** for fast expert advice. Examine devices and make sure the battery compartment is correctly secured, e.g. that the screw or other mechanical fastener is tightened. Do not use if the compartment is not secure. Old/flat batteries can still be dangerous. Dispose of used button batteries immediately and safely at your nearest recycling facility.